

CRISTAL



CRISTAL SEASON 2026

RENOVATED BEAUTY

With stunning interiors, a variety of entertainment options, and an attentive crew, this yacht promises unparalleled comfort, relaxation, and adventure on the Adriatic Sea.

THAT NEVER SLEEPS



**Dream &
Experience**



DESTINATION

Croatia

43.8707° N

15.2324° E

Croatia is one of the most popular yachting destinations with many beautiful regions, historic towns, islands, and small villages.

Cabins

Comfortable mattresses and crisp white sheets are sure to encourage sweet dreams. Cabins on the main deck are donned with sizeable windows offering a gorgeous view of the passing islands. Cabins below the deck are extra spacious and intimate, great for sleeping in.



Sundeck

Sundeck is the main retreat for all gatherings under the sun and stars. Equipped with ample sunbathing chairs, a jacuzzi, a rainforest shower and a fully stocked white marble bar for pure comfort and relaxation. Make sure to connect to the Bluetooth speakers for personalized listening pleasure.

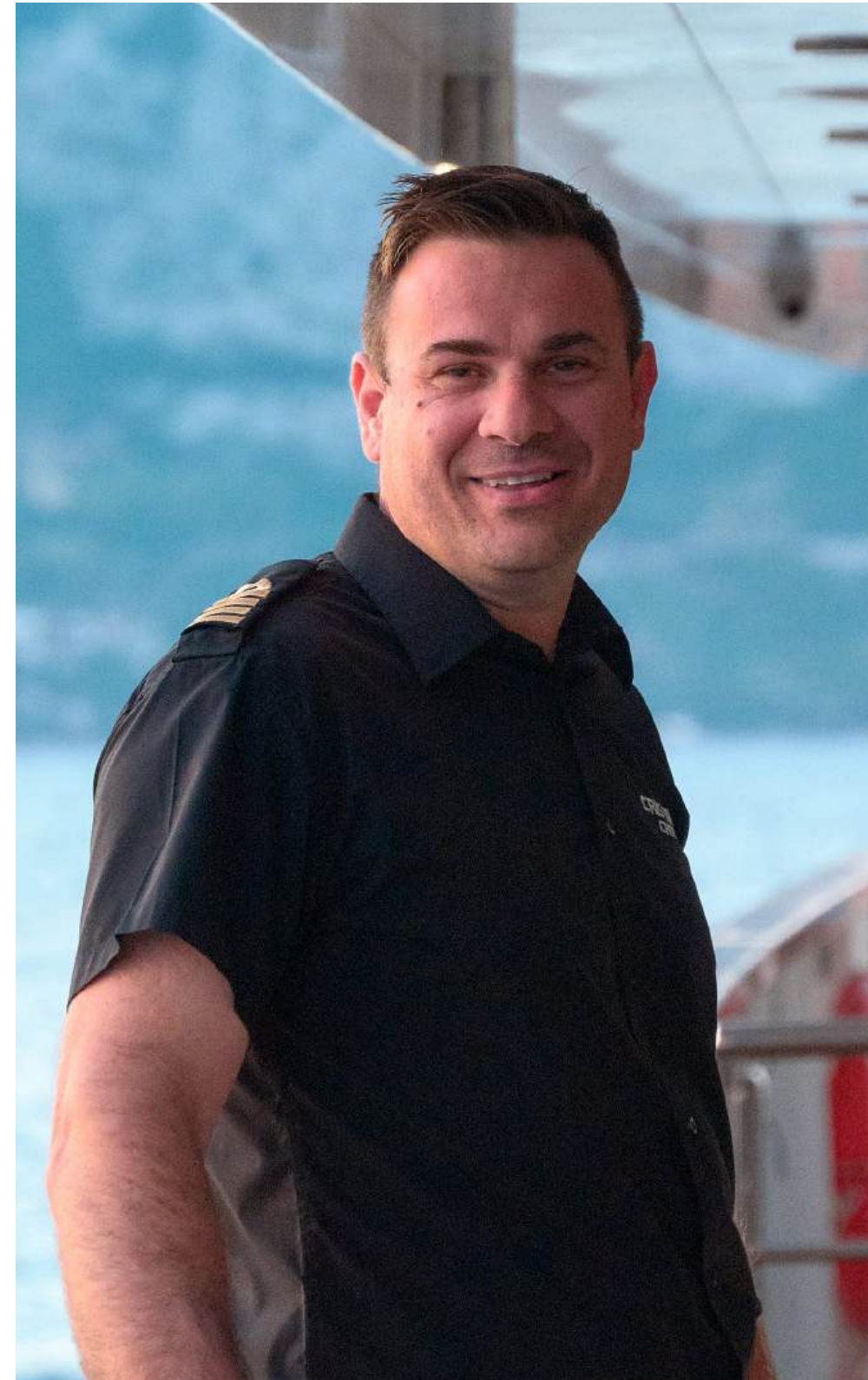


Crew

The crew is professional and kind. We provide service with a smile and our motto is, -“All who enter as guests leave as friends.”

Cuisine

Our chef is experienced and innovative. Offering a modern take on traditional dishes using seasonal ingredients. Let us infuse your taste buds with some home-cooked goodness and delicious desserts.



Spacious lounge area

The perfect area for chitchatting with fellow guests during cocktail hour. A cozy and roomy couch to unwind when weather conditions are not optimal.



Bow Deck

The forward is decked with four snug ivory chaise lounges. The best place to get a tan while witnessing the beauty of nature's creation.



Water Toys

For the active guest who enjoys getting a tan, a workout, and meditating in nature, we got you covered. A Jet ski, 3 SeaBobs, E-Foil, 2 Canoes, 3 Paddleboards, floating platforms, and a waterslide are just the toys for you.

There are also lots of floaties and snorkeling gear available.



Recent additions & refits

2024

- 2 cabins merged into a master cabin
- 2 cabins converted into a cinema/play/game room
- Open gym on sundeck

2025

- Outside dining area
- Additional watersports

2026

- 12 crew members
- A cabin converted into a massage room (4 massages/day included)



Specifications

Length

48.9 m
(160' 4")

Beam

8.6 m
(28' 2")

Draft

3 m
(9' 10")

Cruise speed

8 knots

Cabins / Guests

14 28

Built / Renovated

2018/ 2024

Water Sports

Jet ski, 3 SeaBobs, E-Foil,
2 Canoes, 3 Paddleboards,
Floating platforms,
Waterslide

Crew Description

12 crew members



Cabin Details

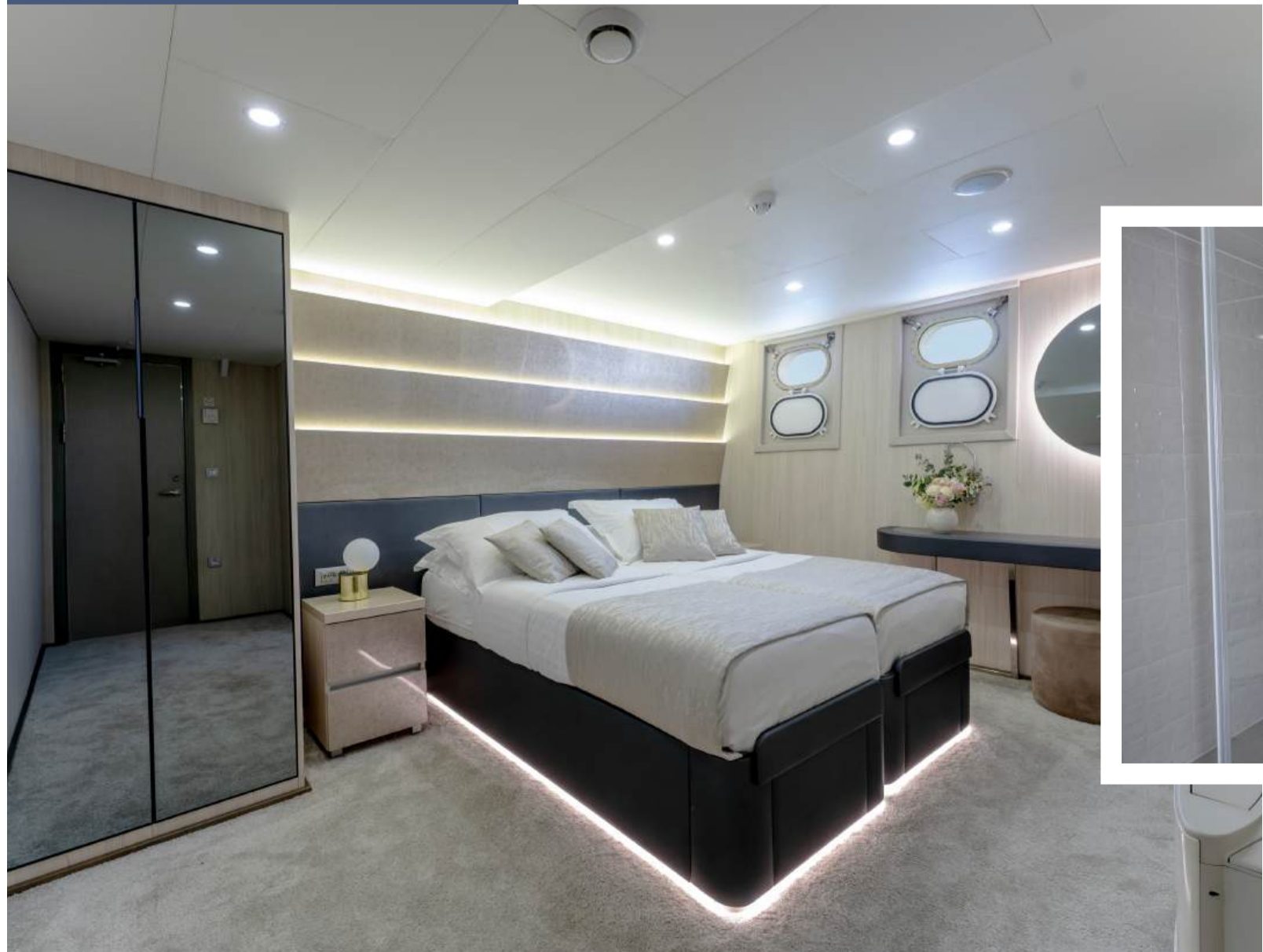


MASTER CABIN



DOUBLE CABIN

DOUBLE CABIN





[Click for video](#)



Renovated & Spacious

PRICES PER WEEK

SEASON A

From 18 April 2026
till 19 May 2026

€100,000

+ A.P.A. + VAT

SEASON B

From 20 May 2026
till 12 June 2026

€110,000

+ A.P.A. + VAT

SEASON C

From 13 June 2026
till 31 August 2026

€120,000

+ A.P.A. + VAT

SEASON D

From 01 September 2026
till 16 September 2026

€110,000

+ A.P.A. + VAT

SEASON E

From 17 September 2026
till 03 October 2026

€100,000

+ A.P.A. + VAT

INCLUDED

Agency Support: guidance through the booking procedure, paperwork, preparation for the cruise, food, drinks, and route organization, during the cruise support, assistance in case of emergency. Entire support before and during the cruise.

Shipboard accommodation: maximum number of 28 guests sleeping in 14 cabins.

Massages: 4 massages/day.

Fuel for cruising: 4 hours/day **Crew:** 12 **Air conditioning:** unlimited hours/day.

Linen: bed sheets, bathroom, and beach towels. **Wi-Fi**

EXTRA PAYMENTS

Mandatory extras

A.P.A. (Advance Provisioning Allowance)

30% of the charter price: To cover the following costs, but not limited to: fuel for tender and water sports equipment; additional fuel for cruising (above 4 h per day), food and beverages for the Charter Party; berthing dues and other harbor charges including pilots' fees, local taxes, divers' fees, customs formalities, charges for waste disposal, charges for water and electricity taken from shore; shipping agents' fees where applicable; Charter Party personal laundry; hire or purchase costs of any special equipment placed on board at the Charterer's request, shoreside transport and excursions, national park entrances and other costs for services requested by Charter Party during the charter and all other costs not specified as included. A.P.A is paid by the Client in addition to the charter fee for all relevant costs for the vessel that are not included in the charter fee. If A.P.A does not cover complete costs, the Client will pay exceeding the amount on board in cash. If costs made on charter are less than the amount given as A.P.A, the amount that was not spent will be returned to the Client at the end of the voyage. A.P.A. does not include a tip for the crew.

VAT: 13% extra on top of the Charter Rate.

Non-Mandatory extras

TIPS: Tips are not included in the price of the charter and are a voluntary way of showing appreciation for a good service. Usually it is 10% to 15% of the charter price, according to your satisfaction, paid to the captain at the end of the charter and distributed equally by the captain to the rest of the crew.

Delivery/Re-delivery Fee: Dubrovnik - 3,000 € fixed cost (in case of empty leg caused by (dis)embarkation outside home port)

Cristal

Disclaimer: This document is for informational purposes only and is not contractual. While we strive for accuracy, the publisher makes no warranties regarding the completeness or usefulness of the information and images provided. Yacht inventory, specifications, prices, etc., may change without notice. Reproduction of any text or images from this document requires written consent from the publisher.